

DRINKING
WATER



CLOSED
WATER
SYSTEMS



SANITARY
HOT WATER

WATER TREATMENT SOLUTIONS **HOUSEHOLD RANGE 2015/2016**





WHO ARE WE?

Design and manufacturing industrial Group, with 60 years of expertise in the field of climatic engineering, the COMAP Group provides overall solutions that enhance the performance of buildings. Our connection, regulation and water treatment solutions reduce overall energy expenditure in buildings while optimising both comfort and safety.

COMAP Water Treatment (WT) is the Group company that specialises in water treatment and water quality.

For more than 30 years, we have been developing a full range of solutions that meet the requirements of industrial, tertiary sector and household applications.

Our industrial site is ISO 9001 certified and is located at Montélier in the Drôme (26) department. We design, manufacture and inspect all our products on site. Our expertise is based on our considerable treatment technologies skills: filtering, anti-scaling protection, softening, disinfection and UVc dechloramination.

OUR SOLUTIONS

Today, our solutions cover eight major fields of application:

<p>1 DRINKING WATER</p>	<p>2 WASTE WATER</p>	<p>3 INDUSTRIAL PROCESS WATER</p>	<p>4 SWIMMING POOL WATER</p>
<p>5 SALT WATER</p>	<p>6 CLOSED WATER SYSTEMS</p>	<p>7 SANITARY HOT WATER</p>	<p>8 GROUND WATER</p>



OUR OFFER

SOLUTIONS FOR PRIVATE USERS

COMAP WT provides private users with its “made in France” industrial expertise through a range of water treatment products and accessories that meet household needs: filtering, anti-scaling, disinfection, softening.

The Komeo water treatment unit is the overall solution that descales systems and purifies the water supply. Komeo provides both protection for the house and optimum drinking water quality through one single appliance. With no chemical treatment or release of salts, Komeo is a perfect alternative to the purchase of water in bottles. It guarantees water without the bad taste of chlorine, and without bacteria, pesticides or heavy metals.



SOLUTIONS FOR INDUSTRY, COMMUNITIES AND THE TERTIARY SECTOR

Our systems can meet a very broad range of requirements in both the industrial and residential (individual and community) fields. We thus serve many different sectors: communities (housing, networks, aquatic systems, health equipment, drinking water and waste water treatment stations, etc.), various industrial sectors (pharmaceutical, foodstuffs, recycling and treatment, etc.), and also the tertiary sector (hotels, balneotherapy, thermal spas, etc.). We also work as an OEM.



INDUSTRIAL SOLUTIONS

Find out more about our full range aimed at industries and communities through a complete collection of data sheets.

WATER TREATMENT

7 to 20 Filtering



Filters

Filter cases	8
Accessories	12
Spare parts	12

Cartridges

Disposable	10
Washable	10
Technical	11

Accessories compatibility table	13
---------------------------------	----

Spare parts compatibility table	14
---------------------------------	----

Combinations of filters, cartridges and accessories	15
---	----

Combinations of filters / cartridges (all types)	16
--	----

Tap mini-filter	17
-----------------	----

Self-cleaning filters	18
-----------------------	----

Sludge collectors	20
-------------------	----

21 to 26 Anti-scaling protection



Electronic anti-scaling systems	22
---------------------------------	----

Magnetic anti-scaling systems	24
-------------------------------	----

Polyphosphate anti-scaling system	25
-----------------------------------	----

27 to 30 UVC disinfection



Uveo range	28
Uveo accessories	30

31 to 34 Softening



Softeo + single unit range and accessories	33
Bisoft dual unit range and accessories	34

35 to 41 Combined treatment units



Treatment at main water supply point	
Komeo water treatment unit	36
Bio-Rain rainwater kit	39



Quality of water, quality of life...

Are you aware of the hardness of your water?



HARDNESS



Low: TH < to 15°



Medium: TH between 15° and 25°



High: TH between 25° and 35°



Very high: TH > 35°

Are you aware of the nitrate content of your water?



NITRATES



More than 40 mg/l



Between 30 and 40 mg/l



Between 20 and 30 mg/l



Between 10 and 20 mg/l



Less than 10 mg/l

FILTERING

Presentation of our filtering range

COMAP Water Treatment offers a full range of water filtering systems that meet many needs.

Benefits offered by filtration:

- ✓ The objective of sediment filtering is to **collect solid particles in suspension** in the water, such as mineral, organic or metal particles.
- ✓ The filtered water thus **keeps its minerals and its dissolved trace elements**, that constitute its original value. Filtering is only the first phase in a more refined action of making water drinkable. The water is filtered by a porous medium that traps the pollution.
- ✓ The COMAP Water Treatment range includes various cartridge technologies: washable, disposable or self-cleaning.



Filtering

Anti-scaling protection

UVc disinfection

Softening

Combined treatment units



Filtering

Filter cases

The empty filters accept COMAPWT 9¾" and 20" cartridges. The range includes the following models:

- **Plastic:** plastic head, brass inserts and opaque or transparent plastic bowls
- **Brass:** brass head, transparent plastic bowl

To complement the filters, a full range of accessories is available.

All our filters meet DTU standard requirements and have obtained the ACS certificate



★ **BASIC ECO: a range designed for further savings**

✓ Filter cases



Ref.	Range	Bowl material	Head material	Bowl dimensions	Dimensions I/O	Type of union.	Dimensions (mm)		Water temp.	Max. pressure	Packaging	Qty.
							D	H				
527126	Premium	Transparent SAN	PP	9¾"	¾"	Female	122	307	5-35°C	6 bars	Box	1
★ Q111001090	★ Basic Eco	★ Transparent SAN	★ PP	★ 9¾"	★ ¾"	★ Female	★ 122	★ 307	★ 5-35°C	★ 4 bars	★ bulk	★ 12
527127	Premium	Transparent SAN	PP	9¾"	1"	Female	122	315	5-35°C	6 bars	Box	1
★ R1990135	★ Basic Eco	★ Transparent SAN	★ PP	★ 9¾"	★ 1"	★ Female	★ 122	★ 315	★ 5-35°C	★ 4 bars	★ bulk	★ 12



Ref.	Range	Bowl material	Head material	Bowl dimensions	Dimensions I/O	Type of union.	Dimensions (mm)		Water temp.	Max. pressure	Packaging	Qty.
							D	H				
527130	Premium	Transparent SAN	Brass	9¾"	¾"	Female	127	300	5-50 °C	10 bars	Box	1
527131	Premium	Transparent SAN	Brass	9¾"	1"	Female	127	307	5-50 °C	10 bars	Box	1
527132	Premium	Transparent SAN	Brass	9¾"	1¼"	Female	134	315	5-50 °C	10 bars	Box	1

* Transparent SAN: Transparent Styrene Acrylonitrile



Ref.	Range	Bowl material	Head material	Bowl dimensions	Dimensions I/O	Type of union.	Dimensions (mm)		Water temp.	Max. pressure	Packaging	Qty.
							D	H				
527177	Premium	Transparent SAN	Brass	20"	1½"	Female	140	580	5-50 °C	10 bars	Box	1
527178	Premium	Transparent SAN	Brass	20"	2"	Female	140	592	5-50 °C	10 bars	Box	1

* Transparent SAN: Transparent Styrene Acrylonitrile

Filtering

Filter cases



Ref.	Range	Bowl material	Head material	Bowl dimensions	Dimensions I/O	Type of union.	Dimensions (mm)		Water temp.	Max. pressure	Packaging	Qty.
							D	H				
527226	Premium	PP Opaque	PP	9¾"	¾"	Female	122	307	5-35°C	6 bars	Box	1



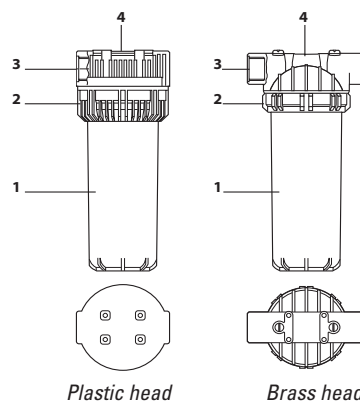
Ref.	Range	Bowl material	Head material	Bowl dimensions	Dimensions I/O	Type of union.	Dimensions (mm)		Water temp.	Max. pressure	Packaging	Qty.
							D	H				
527170	Premium	Transparent SAN	PP	20"	¾"	Male	122	565	5-35°C	6 bars	Box	1
527171	Premium	Transparent SAN	PP	20"	1"	Female	122	565	5-35°C	6 bars	Box	1



Ref.	Range	Bowl material	Head material	Bowl dimensions	Dimensions I/O	Type of union.	Dimensions (mm)		Water temp.	Max. pressure	Packaging	Qty.
							D	H				
527270	Premium	PP Opaque	PP	20"	¾"	Male	122	565	5-35°C	6 bars	Box	1

FILTER COMPONENTS

1. Filter bowl
2. Nut
3. Insert
4. Head



* Transparent SAN: Transparent Styrene Acrylonitrile



Filtering

Sediment filtering cartridges

✓ Disposable cartridges



Ref.	Range	Material	Cartridge height	Filtering threshold	Max. flow (m³/h)	Max. temperature	Max. service pressure	Dimensions (mm)		POE/POU*	Packaging	Qty.
								Dia.	Height			
517505	Premium	Sprayed PP	9¾"	5 µm	1.5	35°C	6 bars	62	248	POU	box	1
517510	Premium	Sprayed PP	9¾"	20 µm	3	35°C	6 bars	62	248	POE	box	1
Q113001090	Basic Eco	Sprayed PP	9¾"	20 µm	3	35°C	6 bars	62	248	POE	bulk	40
517520	Premium	Sprayed PP	20"	20 µm	5	35°C	6 bars	62	510	POE	box	1



Ref.	Range	Material	Cartridge height	Filtering threshold	Max. flow (m³/h)	Max. temperature	Max. service pressure	Dimensions (mm)		POE/POU*	Packaging	Qty.
								Dia.	Height			
RI660112	Basic Eco	Wound PP	9¾"	25 µm	2.5	35°C	6 bars	57	248	POE	bulk	70
517709	Premium	Pleated fabric	9¾"	15 µm	2	35°C	6 bars	70	248	POE	box	1



✓ Washable cartridges



Ref.	Range	Material	Cartridge height	Filtering threshold	Max. flow (m³/h)	Max. temperature	Max. service pressure	Dimensions (mm)		POE/POU*	Packaging	Qty.
								Dia.	Height			
527309	Premium	Nylon	9¾"	80 µm	3.5	35°C	6 bars	64	248	POE	box	1
Q113004090	Basic Eco	Nylon	9¾"	80 µm	3.5	35°C	6 bars	64	248	POE	bulk	30
527320	Premium	Nylon	20"	80 µm	7	35°C	6 bars	64	508	POE	box	1

✓ Complete filtering kit 20 µm



Reference	Description	Function
Q516006001	Filtering kit for main entry on system	Filters out all pollution present in the water, bigger than 20 µm

* POE: "Point Of Entry" - Installation on water entry. May also be used at POU
POU: "Point Of Use" - Installation at point of use

Filtering

Filtering cartridges for specific applications

Filtering for specific applications

Technical filtering cartridges are designed to trap specific elements that may be present in the water. Each cartridge in the range provides a suitable solution for specific water quality problems. Combining various cartridge technologies solves many of the water quality problems.

Prefiltering is recommended, in order to ensure maximum efficiency of the technical cartridges. All the technical cartridges are disposable.

For hygiene reasons, cartridges should be replaced at least every 6 months, even if the maximum treatment capacity of the cartridge has not been reached.

✓ Technical cartridges

Extruded Activated Carbon



Ref.	Range	Dim.	Filtering threshold	Max. flow (m ³ /h)	Treatment capacity	Max. temp.	Max. press.	Dimensions (mm)		Treatment	Function	POE/POU*	Packaging	Qty.
								D	H					
527809	Premium	9¾"	10 µm	1.5	15 000 l	35°C	4 bars	70	248	Sediment/taste/smell/pesticides/herbicides	Filtering/adsorption	POU	box	1
★ Q113006090	Basic Eco	9¾"	10 µm	1.5	15 000 l	35°C	4 bars	70	248	Sediment/taste/smell/pesticides/herbicides	Filtering/adsorption	POU	bulk	25
527820	Premium	20"	10 µm	3	30 000 l	35°C	4 bars	70	508	Sediment/taste/smell/pesticides/herbicides	Filtering/adsorption	POE	box	1



Ref.	Range	Material	Dim.	Filtering threshold	Max. flow (m ³ /h)	Treatment capacity	Max. temp.	Max. press.	Dimensions		Treatment	Function	POE/POU*	Packaging	Qty.
									D	H					
527709	Premium	Plastic container + Activated Carbon + KDF®	9¾"	N/A	0.15	2000 l	20 °C	4 bars	73	248	Heavy metals /taste /smell / pesticides / herbicides	anti Heavy metals	POU	box	1
Q511011001	Premium	Activated carbon + KDF®	20"	10 µm	3	30 000 l	35°C	4 bars	70	508	Heavy metals / taste / smell / pesticides / herbicides	adsorption of heavy metals	POE	box	1
528809	Premium	HOLLOW FIBER + Activated Carbon	9¾"	0.1 µm	0.36	5000 l	35°C	4 bars	73	248	Anti-bacteria /taste/smell/pesticides/herbicides	disinfection	POU	box	1
528909	Premium	HOLLOW FIBER	9¾"	0.1 µm	1.2	10000 l	35°C	4 bars	73	248	Anti-bacteria	disinfection	POU	box	1

* POE: "Point Of Entry" - Installation on water entry. May also be used at POU
POU: "Point Of Use" - Installation at point of use

Filtering

Accessories and spare parts

✓ Unlocking wrenches



Ref.	Range	Application	Qty.
528000	Premium	removal of plastic head filter	1
★ Q114001090	Basic Eco	removal of plastic head filter	10
528030	Premium	removal of brass head filter	1

✓ Spare parts for filtering systems

Ref.	Description	Qty.
527799	soft seal	5
527199	filter bowl O-ring	5
527192	plastic nut for filter bowl	1
527191	transparent bowl 9¾"	1
527291	opaque bowl 9¾"	1
527193	transparent bowl 20"	1
RI630037	opaque bowl 20"	1
527198	O-ring kit for filter	1

✓ Mounting bracket



Ref.	Range	Application	Qty.
529311	Premium	mounting for plastic head filter	1
★ Q114002090	Basic Eco	mounting for plastic head filter	10
Q114000001	Premium	mounting for brass head filter	1
529312	Premium	mounting for 2 plastic head filters (screwed together)	1

✓ Non-return valve for nipples



Ref.	Range	Application	Qty.
527197	Premium	prevent return flow from cartridge to water entry	1

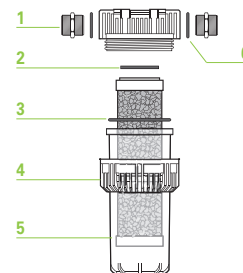
✓ Connections



Ref.	Range	Name	Application	Qty.
528906	Premium	¾" FF union	double female joiner/rotary nut	1
528100	Premium	adapter	joiner for washable nylon cartridges	1
528101	Premium	adapter	joiner for 2 plastic containers	1
Q511008001	Premium	¾" male connection kit	set of nipples + seals for ¾" filter	1
Q511009001	Premium	1" male connection kit	set of nipples + seals for 1" filter	1

FILTER COMPONENT ELEMENTS

1. Non-return valve
2. Soft seal
3. O-ring for filter bowl
4. Plastic nut for filter case
5. Transparent or opaque bowl
6. Set of seals for filter case



Filtering

Compatibility table - Accessories

		528000	Q114001090	529311	Q114002090	529312	528030	Q114000001	Q511008001	Q511009001	528906	528100	528101	527197	
		Unlocking wrench	Unlocking wrench	Single mounting bracket	Single mounting bracket	Dual mounting bracket	Unlocking wrench	Single mounting bracket	¾" male union kit	1" male union kit	¾" FF union	Adapter piece	Adapter piece	Non-return valve	
FILTER CASES	527126	¾" SAN Transp. 9¾"	✓	✓	✓	✓	For 2 filters		✓		✓				
	Q111001090	¾" SAN Transp. 9¾"	✓	✓	✓	✓	For 2 filters		✓		✓				
	527127	1" SAN Transp. 9¾"	✓	✓	✓	✓	For 2 filters			✓					
	R1990135	1" SAN Transp. 9¾"	✓	✓	✓	✓	For 2 filters			✓					
	527226	¾" PP Opaque 9¾"	✓	✓	✓	✓	For 2 filters		✓		✓			✓	
	527130	¾" Brass Transp. 9¾"						✓	✓	✓		✓			
	527131	1" Brass Transp. 9¾"						✓	✓		✓				
	527132	1¼" Brass Transp. 9¾"						✓	✓						
	527177	1½" Brass Transp. 20"						✓	✓						
	527178	2" Brass Transp. 20"						✓	✓						
	527170	¾" SAN Transp. 20"	✓	✓	✓	✓	For 2 filters			✓		✓			
	527171	1" SAN Transp. 20"	✓	✓	✓	✓	For 2 filters				✓				
	527270	¾" PP Opaque 20"	✓	✓	✓	✓	For 2 filters			✓		✓			✓
WASHABLE CARTRIDGES	527309	Nylon 9¾" - 80 µm										✓			
	Q113004090	Nylon 9¾" - 80 µm										✓			
TECHNICAL CARTRIDGES	527809	Extruded activated carbon 9¾"												✓	
	Q113006090	Extruded activated carbon 9¾"												✓	
	527820	Extruded activated carbon 20"													
	527709	Plastic + Activated Carbon + KDF 9¾"											✓	✓	
	528809	Hollow fiber + Activated Carbon 9¾"												✓	
528909	Hollow fiber 9¾"												✓		



Filtering

Compatibility table - Spare parts

			527799	527199	527192	527191	527291	527193	RI630037	527198
			Soft seal	O-ring filter bowl	Plastic nut for filter bowl	Transparent bowl 9¾"	Opaque bowl 9¾"	Transparent bowl 20"	Opaque bowl 20"	O-rings kit for filter
FILTER CASES	527126	¾" SAN Transp. 9¾"		✓	✓	✓				✓
	Q111001090	¾" SAN Transp. 9¾"		✓	✓	✓				✓
	527127	1" SAN Transp. 9¾"		✓	✓	✓				
	RI990135	1" SAN Transp. 9¾"		✓	✓	✓				
	527226	¾" PP Opaque 9¾"		✓	✓		✓			✓
	527130	¾" Brass Transp. 9¾"		✓		✓				
	527131	1" Brass Transp. 9¾"		✓		✓				
	527132	1 ¼" Brass Transp. 9¾"		✓		✓				
	527177	1 ½" Brass Transp. 20"		✓				✓		
	527178	2" Brass Transp. 20"		✓				✓		
	527170	¾" SAN Transp. 20"		✓	✓	✓		✓		✓
	527171	1" SAN Transp. 20"		✓	✓	✓		✓		
	527270	¾" PP Opaque 20"		✓	✓	✓			✓	✓
	WASHABLE CARTRIDGES	527309	Nylon 9¾"- 80 µm	✓						
527320		Nylon 20"- 80 µm	✓							
Q113004090		Nylon 9¾"- 80 µm	✓							
TECHNICAL CARTRIDGES	527809	Extruded Activated Carbon 9¾"	✓							
	Q113006090	Extruded Activated Carbon 9¾"	✓							
	527820	Extruded Activated Carbon 20"	✓							
	527709	Plastic + Activated Carbon + KDF 9¾"	✓							
	528809	Hollow fiber + Activated Carbon 9¾"	✓							
	528909	Hollow fiber 9¾"	✓							

Filtering

Filters /cartridges / accessories combinations

All recommendations should be installed at the point of use (POU).

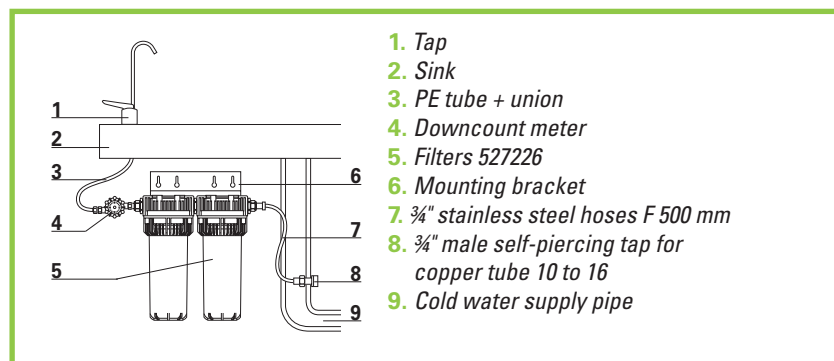
The proposed combinations form mini treatment stations. They should be installed on a water point or under a sink, using the fountain valve kit (see diagram below).

Filtered elements			Cartridges (p.10-11)			Recommended accessories (p.12)	Flow (l/h)
Level 1	Level 2	Level 3	Cartridge 1	Cartridge 2	Cartridge 3		
bad taste / chlorine smell / pesticides herbicides	bacteria		527809	528909		529312 + 528000	1200
sediment	bad taste / chlorine /smell pesticides herbicides + bacteria		517510	528809		529312 + 528000	360
sediment	bad taste / chlorine / smell pesticides herbicides + heavy metals		517510	527709		529312 + 528000	150
sediment	bad taste / chlorine /smell pesticides herbicides + heavy metals	bacteria	517510	527709	528909	529312 + 528000	150
sediment	bad taste / chlorine /smell pesticides / herbicides		517510	527809		529312 + 528000	1500

UNDER-SINK FOUNTAIN

Filters may be assembled in series or in parallel, depending on the enhancement required, the delivery required and the volume of water to be enhanced. They can form real «under-sink fountain» type filtering stations.

The under-sink kit is installed as a bypass on the kitchen cold water pipe. It feeds a specific water tap on the sink (2nd tap).





Filtering

Filter /cartridge combinations - all models

FILTER CASES

Reference	Reference	Material	527126	Q11001090	527127	RI990135	527226	527130	527131	527132	527177	527178	527170	527171	527270	
			¾" PP Transp. 9¾"	¾" PP Transp. 9¾"	1" PP Transp. 9¾"	1" PP Transp. 9¾"	¾" PP Opaque 9¾"	¾" Brass Transp. 9¾"	1" Brass Transp. 9¾"	1¼" Brass Transp. 9¾"	1½" Brass Transp. 20"	2" Brass Transp. 20"	¾" PP Transp. 20"	1" PP Transp. 20"	¾" PP Opaque 20"	
Impurities filtered	Disposable cartridges	517505	Sprayed PP	✓	✓	✓	✓	✓	✓	✓						
		517510	Sprayed PP	✓	✓	✓	✓	✓	✓	✓						
		517520	Sprayed PP									✓	✓	✓	✓	✓
		RI660110	Wound PP	✓	✓	✓	✓	✓	✓	✓						
		517709	Pleated fabric	✓	✓	✓	✓	✓	✓	✓						
		Q113001090	Sprayed PP	✓	✓	✓	✓	✓	✓	✓						
	Washable Cartridges	527309	Nylon	✓	✓	✓	✓	✓	✓	✓						
		527320	Nylon									✓	✓	✓	✓	✓
		Q113004090	Nylon	✓	✓	✓	✓	✓	✓	✓						
	Technical cartridges	527809	Extruded activated carbon					✓								
		Q113006090	Extruded activated carbon					✓								
		527820	Extruded activated carbon													✓
		527709	Activated carbon + KDF					✓								
		528809	Hollow fiber + Activated carbon					✓								
		528909	Product hollow					✓								

Filtering

Altipur tap mini-filter

The **Altipur tap mini-filter** is suitable for fitting in all kitchens and gives quality water that is both healthy and tasty, directly from the tap.

Ideal for drinking water, it eliminates the bad taste of chlorine, impurities and pollution.

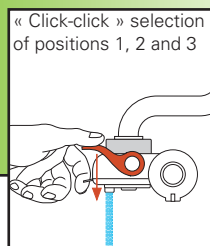
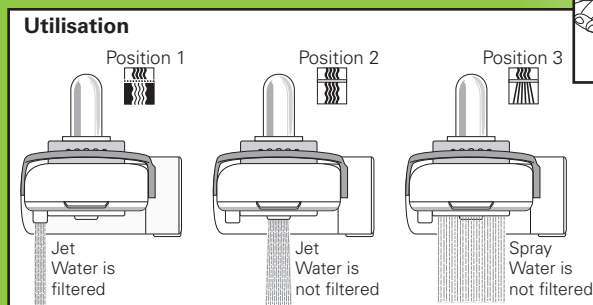
In addition, **THE HOLLOW FIBER TECHNOLOGY** neutralises any bacteria present in the water. Its micro-porous structure, with 3 filtering layers, filters the water without changing its physical-chemical quality (mineral salts, trace elements).

Technical features

The click-click control selector can be set to 3 positions:

1. Filtered water
2. Water not filtered, straight jet
3. Water not filtered, spray jet

Mounting by 7 adapters on all types of tap, male or female thread



✓ Tap filter



Reference	Material case	Function 1	Function 2	Function 3	Technologies	Max. service pressure	Max. instant. flow	Max. temp.	Max. cartridge capacity	Box
Q112003001	ABS	sediment prefiltering	bad taste, pesticides and herbicides treatment	bacteria	Activated carbon+hollow fiber	3.5 bars	180 l/h (new cartridge)	50°C	2000 l (or 6 months)	1

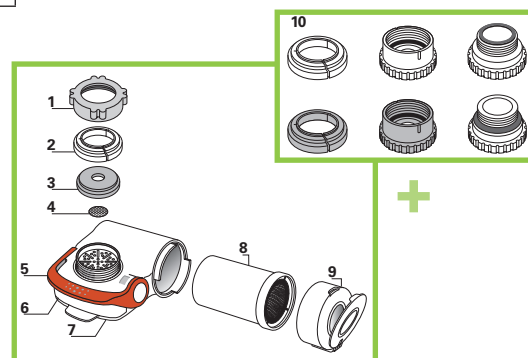
✓ Spare parts



Reference	Name	Box
Q511001001	Spare cartridge	1

MINI FILTER COMPONENT ELEMENTS

1. Mounting nut
2. 16 mm adapter
3. Waterproof seal
4. Prefiltering mesh
5. Selector lever
6. Filtered water outlet
7. Non-filtered water outlet
8. Cartridge
9. Cover with window for cartridge
10. Adapter kit





Filtering

Self-cleaning filters

Filtering for specific applications

Self-cleaning filters are generally installed on the water supply entry. They feature a manual self-cleaning system that requires no disassembly, water cutoff or consumables. Sediment is evacuated from the bottom of the filter, through a manual action by the user. The filter must always be installed in the vertical position, to ensure that the sediment is evacuated.

The COMAP Water Treatment range offers 2 different technologies:

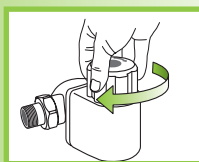
- ✓ Bravofil **model**: Brushing and washing by backwash
- ✓ Stream **model**: Cleaning by decompression



Clean your filter cartridge in a single movement

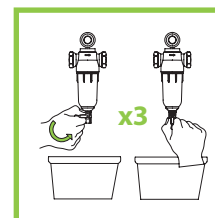
BRAVOFIL MODEL

1. Operating the handle cleans the outside of the mesh by water flow, by allowing the water to flow from inside to outside (backwash). Simultaneously, the mesh is rotated once on the fixed brushes of the filter.
2. Operating the handle a second time cleans the mesh from the inside to the outside, by high pressure (turbo water spray) and expels particles towards the evacuation, which then opens. Simultaneously, the mesh is rotated a second time on the fixed brushes of the filter.

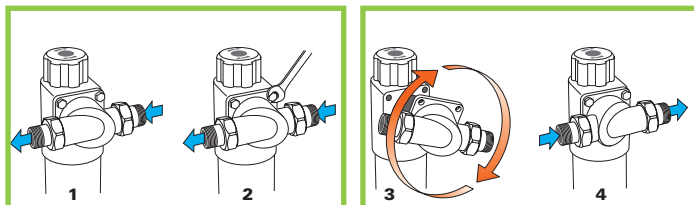


STREAM MODEL

1. Opening the valve at the bottom of the filter creates decompression. This action separates and evacuates the sediment.
2. Repeat the operation 3 times, to ensure proper cleaning.



Note: Depending on the water flow direction, the filter base can be easily removed, turned around and reinstalled. The base must be screwed on before operation.



For hygiene reasons, the filter cartridge must be cleaned every 2 months (or every 15 m³). The stainless steel mesh and brushes should be replaced every 2 years (or every 180 m³).

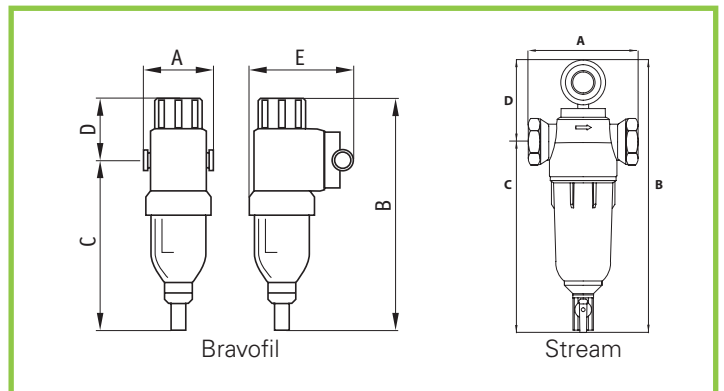
Filtering

Self-cleaning filters

Self-cleaning filters

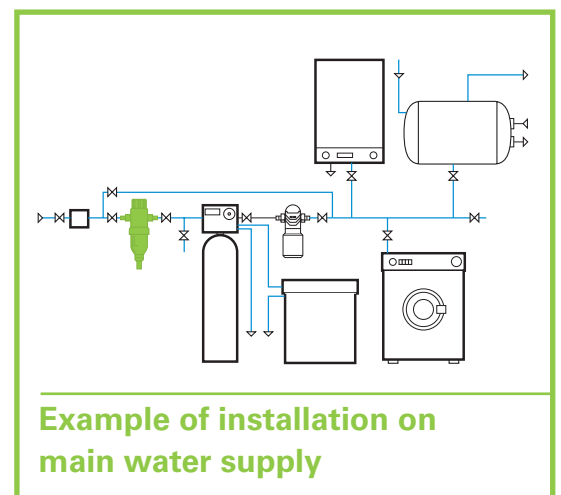


Model	Ref.	Filtering threshold	Mesh material	Filter case	Max. pressure	Max. temp.	Inlet/Outlet	Max. instant. flow	A (mm)	B (mm)	C (mm)	D (mm)	E (mm)	cleaning function
Bravofil	522526	90 µm	Stainless steel 304 L	PP	10 bars	35°C	¾" Male	3 m³/h	115	340	260	80	150	by top manual control
Bravofil	522527	90 µm	Stainless steel 304 L	PP	10 bars	35°C	1" Male	4 m³/h	115	340	260	80	150	by top manual control
Bravofil	522528	90 µm	Stainless steel 304 L	PP	10 bars	35°C	1¼" Male	5 m³/h	115	340	260	80	150	by top manual control
Stream	Q113005001	90 µm + 40 µm	Stainless steel 316 L	Brass	6 bars	25 °C	¾" Female	3 m³/h	112	270	188	82	N/A	by manual valve
							1" Female	4 m³/h	102	270	188	82	N/A	



Spare parts

Model	Ref.	Name	Box
Bravofil	522599	Mesh + 5 brushes	1
Stream	Q511017001	Set of meshes 90 µm + 40 µm	1
Stream	RI610071	Bowl O-ring	1





Filtering

Sludge collectors

Operating principle

The mini-CDB sludge collectors treat the entire loop return flow. They act in three complementary and consecutive ways, that are essential to obtain a good result:

- Decanting under the effect of a greatly reduced fluid velocity, due to the large diameter of the filter case.
- Magnetic capturing of metal oxide particles in the low velocity zone, using an Alnico 600 bar magnet.
- 300 µm filtering on a vertical stainless steel mesh, which stimulates self-cleaning.

The water is thus continuously clarified and ensures:

- the proper operation of the control systems (valve mechanisms, thermostat valves, temperature sensors, etc.),
- that the small transit section exchangers are not obstructed,
- less frequent corrosion of the "sub-deposit" type, due to differential oxygenation in the pipe zones.

FIELDS OF APPLICATION

Mini-CDB sludge collectors effectively collect the particles in suspension that are carried in the hot or cold closed circuits, and particularly in individual central heating systems (radiators or heated floors).

ADVANTAGES OF THE SLUDGE COLLECTOR

The sludge collector solves the following problems:

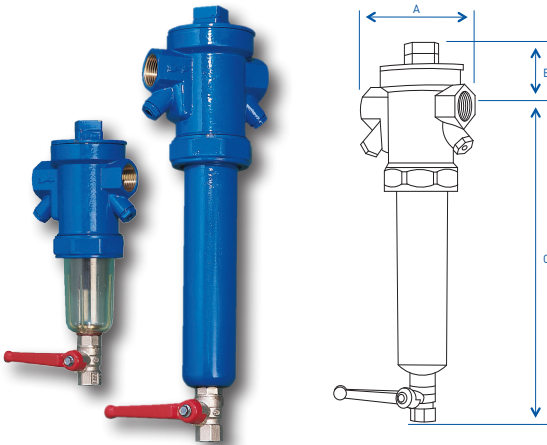
- ✓ poor circulation flow,
- ✓ sludge deposit on the seats of the power-operated circulation valves (magnetic phenomena),
- ✓ sludge congestion in the control Tee pieces and column foot valves,
- ✓ sludge congestion in the distribution manifolds,
- ✓ sludge congestion at low points (radiators, heated floors, etc.),
- ✓ deterioration of circulators,
- ✓ clogging of boilers and exchangers (sludge precipitated with the scaling).

Clearing sludge from the systems allows the installation to operate properly, reduces energy consumption and reduces the maintenance requirement. System has no pump, so no noise problem.

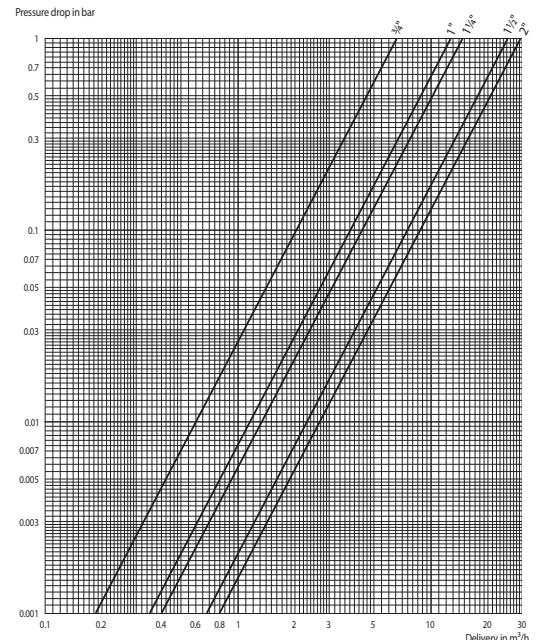
Technical Characteristics

Treats the entire loop return flow for faster clarification.

- ✓ Supplied complete, ready to connect.
- ✓ Max. service pressure = 5 bars (at 60°C).
- ✓ Magnetic collection using an Alnico 600 bar magnet, positioned vertically on an easily removable mounting.
- ✓ 300 µm filtering on stainless steel mesh (vertical filter causes sludge to fall).
- ✓ Low velocity < 0.1 m/s inside the case of the mini-CDB sludge collector. Max. flow: 3 m³/h.



Bowl material	Utilisation temperature	Ø Inlet / Outlet	Reference	A*	B*	C*
Plastic	5 to 60°C	¾"	521006	96	65	190
		1"	521008	123	93	190
		1¼"	521010	123	93	195
		1½"	521012	145	110	230
		2"	RI970047	145	110	230
Metal	5 to 90°C	¾"	521086	96	65	290
		1"	521088	123	93	290
		1¼"	521090	123	93	295
		1½"	521092	145	110	330
		2"	RI970018	145	110	330



ANTI-SCALING

Presentation of anti-scaling range

COMAP Water Treatment offers a range of anti-scaling appliances of various technologies.

- ✓ Electronic anti-scaling systems that treat scaling by the action of an **electrical field**.
- ✓ Magnetic anti-scaling systems that treat scaling by the action of a **magnetic field**.
- ✓ Polyphosphate anti-scaling systems that treat scaling by **dissolving polyphosphate crystals** in the water.

These various processes all prevent scaling in water systems.



Filtering

Anti-scaling protection

UVc disinfection

Softening

Combined treatment units



Anti-scaling

Electronic anti-scaling systems

Operating principle

The COMAP 5106 electronic scaling inhibitor causes the Ca^{2+} and CO_3^{2-} ions present in the water to be precipitated, under the effect of an induced pulsed electrical field, in the form of CaCO_3 calcium carbonate crystals. The precipitated crystals swell by a few nm up to a few μm .

The electronic scaling inhibitor is not a softener. It doesn't change the water balance and doesn't eliminate mineral salts. It thus doesn't change its drinkability. The water is neither softened (no excess of sodium or insufficient calcium) nor made aggressive.

The electronic anti-scaling system thus neutralises scaling by stopping its encrusting power and so descales installations.

The electronic anti-scaling system is designed to be installed on cold water systems but can also be installed in recycling on sanitary hot water loops.

6 REASONS TO CHOOSE ELECTRONIC ANTI-SCALING TECHNOLOGY

- ✓ to **ELIMINATE EXISTING SCALING** by gradual disintegration
- ✓ to prevent the formation of a scaling deposit and **TO PROTECT YOUR SYSTEM AND PIPES**
- ✓ to conserve the original mineral content in the calcium carbonate and mineral salts necessary for **HEALTH**
- ✓ to ensure a **TREATMENT OF UP TO 3 m³/h WITH NO PRESSURE DROP**
- ✓ for treatment **WITHOUT CHEMICAL SUBSTANCES, WITHOUT MAINTENANCE**, with no water consumption and no release to the drains
- ✓ for considerable energy saving compared with alternative technologies: **LESS THAN 1€ PER MONTH!**

+ PRODUCTS



ATEX CSTB
N° 575 - 05 / 95



GUARANTEE
3 YEARS

MAINTENANCE AND GUARANTEE

*Guarantee: 3 years parts and labour, excluding transport and consumables.

Anti-scaling

Electronic anti-scaling systems

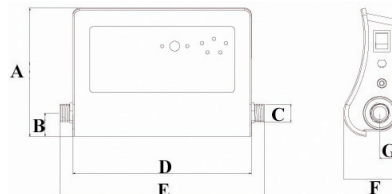


5106



Ref.	A*	B*	C	D*	E*	F*	G*
Q311002001	193	30	3/4"	270	320	83	27

* Dimensions in mm

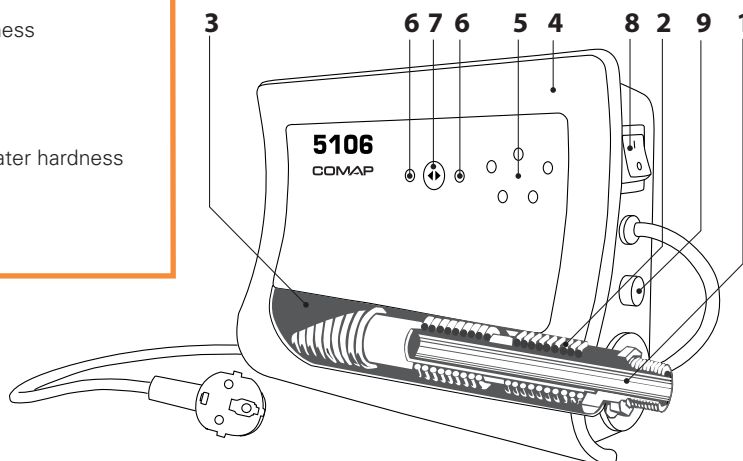


Technical Characteristics

- ✓ Service pressure: 0 to 4 bars.
- ✓ Max. flow: 3 m³/h.
- ✓ Fuse: 32 mA T. (5x20)
- ✓ Electrical rating: Max. 10 VA
- ✓ Waterproofing: IP 31.
- ✓ Water temperature: 5 to 70°C.
- ✓ No pressure loss.
- ✓ Protection against mains overvoltage.
- ✓ Anti-scaling treatment power selector: position 1 for water with TH < 25°F, position 2 for water with TH ≥ 25°F.
- ✓ Water hardness treated up to 60°F or 34°DH.
- ✓ 3/4" connection.
- ✓ Connection to single phase electricity system 230 V AC 50/60 Hz + earth.

THE 5106 IN DETAIL

1. Polythene treatment chamber with brass unions
2. Triple winding for maximum treatment effectiveness
3. Dielectric resin
4. ABS plastic case
5. Signal control lights
6. Signal adjustment position indicators
7. Key to adjust treatment signal as a function of water hardness (°f)
8. On-Off button
9. Fuse T 32 mA (5x20)





Anti-scaling

Physic magnetic anti-scaling

Operating principle

COMAP anti-scaling systems cause the Ca^{2+} and CO_3^{2-} ions present in the water to be precipitated, under the effect of a magnetic field, in the form of CaCO_3 calcium carbonate crystals. The precipitated crystals swell by a few nm up to a few μm .

The magnetic anti-scaling is not a softener. It doesn't change the water balance and doesn't eliminate mineral salts. It thus doesn't change its drinkability. The water is neither softened (no excess of sodium or insufficient calcium) nor made aggressive.

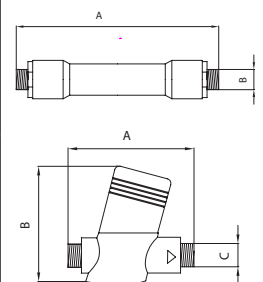
Why use magnetic anti-scaling technology?

- ✓ to **eliminate existing scaling** by gradual disintegration
- ✓ to **prevent scaling deposits** from forming, thus protecting the entire installation and pipe systems
- ✓ to facilitate the removal of deposits due to water evaporation (by wiping and not by abrasion) on sanitary systems and taps/valves
- ✓ to conserve the original mineral content in the calcium carbonate and mineral salts necessary for health
- ✓ for **low flow applications or in recycling**
- ✓ for **installations with no electrical connection**
- ✓ for minimum space requirement, allowing installation in confined spaces (riser for example)
- ✓ for treatment **without chemical substances**, without maintenance, with no water consumption and no release to the drains

+ PRODUCTS



Ref.	Description	A (mm)	B (mm)	C (mm)	Weight (kg)	Max. flow (m ³ /h)	Max. pressure	Water * temp.	Limit of utilisation	Qty.
Physic 510206	Inline magnetic anti-scaling	180	¾"	-	0.78	1.5	6 bars	5-35°C	Up to 40°F or 20°dH	1
Physic 510306	Magnetic anti-scaling slaved to flow	140	130	¾"	2.10	2.2	6 bars	5-35°C	Up to 40°F or 20°dH	1



* Water temperature before treatment.
Water temperature after treatment must not exceed 70°C.

GUARANTEE

2 YEARS

MAINTENANCE AND GUARANTEE

*Guarantee: 2 years parts and labour, excluding transport and consumables.

Anti-scaling

Anti-scaling using polyphosphates

Operating principle

The polyphosphate crystals neutralise the calcium ions, to prevent the precipitation of calcium carbonate (scaling).

The crystals also have anti-corrosive properties: the iron ions have an affinity for the polyphosphates, irrespective of the water pH, which thus inhibits corrosion.



Why use the polyphosphates anti-scaling technology?

- ✓ To **neutralise scaling**
- ✓ For the **savings made**
- ✓ For its **anti-corrosion properties**
- ✓ To **protect standalone units** (water heater, washing machine, etc.)

+ PRODUCTS



✓ Filtering units and polyphosphate protection

Description: 2 polypropylene filters 9¾" 3/4 transparent bowl type



Ref.	I/O	Max. flow (m³/h)	Max. pressure	Water temp.	Capacity	Limit of utilisation	Sediment cartridge 25 µm	Polyphosphates cartridge	Wrench + bracket	Bypass	Packaging	Qty.
Q311001090	¾"	3	6 bars	5-35°C	up to 180 m³	up to 40°F or 20°dH.	✓	✓	✓		box	5
Q112001001	¾"	3	6 bars	5-35°C	up to 180 m³	up to 40°F or 20°dH.	✓	✓	✓	✓	box	5



✓ Mini filter with polyphosphates for washing machine

Description: 1 polypropylene filter transparent bowl type
d x L: 60 x 141 mm



Ref.	I/O	Flow (m³/h)	Max. pressure	Water temp.	Capacity	Limit of utilisation	Polyphosphates cartridge	Packaging	Qty.
Q311003090	¾"	0.4	6 bars	5-35°C	Up to 30 m³	Up to 40°F or 20°dH.	✓	bulk	10

Note: For reasons of hygiene, the cartridge of polyphosphate crystals should be recharged or changed at least every 12 months, even if the cartridge maximum water volume has not been consumed.

* In the case of an extended period of absence, the polyphosphate crystals cartridge should be removed from its filter (and stored in a dry, dark place) in order to prevent the crystals from being destroyed. When reinstalling the cartridge, run a few liters of water through it before utilisation.



Anti-scaling

Accessories and consumables in the range

✓ Consumables



Ref.	Description	Dimensions		Max. flow (m³/h)	Max. pressure	Water temp.	Compatibility	Qty.
		Dia. (mm)	Height (mm)					
527509	polyphosphate cartridge 9¾"	72	248	3	6 bars	5-35°C	any filter and unit 9¾"	1
Q312001090	Basic Eco polyphosphate cartridge 9¾"	72	248	3	6 bars	5-35°C	any filter and unit 9¾"	25

Note: For hygiene reasons, the cartridge of polyphosphate crystals should be recharged or replaced at least every 12 months, even if the cartridge maximum water volume has not been consumed.

* In the case of an extended period of absence, the polyphosphate crystals cartridge should be removed from its filter (and stored in a dry, dark place) in order to prevent the crystals from being destroyed. When reinstalling the cartridge, run a few liters of water through it before utilisation.

✓ Recharges



Ref.	Description	Compatibility	Qty.
529505	polyphosphate recharge 1 kg	any type of polyphosphate cartridge + mini-filters	1
Q312004090	polyphosphate recharge 400 g	any type of polyphosphate cartridge + mini-filters	25

✓ Accessories



Ref.	Description	Compatibility	Qty.
Q114003001	bypass	any type of dual filter unit ¾"	5

UVC DISINFECTION

Presentation of our disinfection range

COMAP Water Treatment offers UV radiation disinfection solutions, to ensure optimum water quality.

The UVC generators in the Uveo range **eliminated the bacteria and viruses** present in water. UVC radiation technology is a particularly effective physical process that can be applied to drill water, network water or water collected in other ways. Whether water is declared drinkable or not, it remains subject to the development of bacteria.

Water treated by UVC radiation is not chemically treated and conserves its original taste. It also conserves its valuable mineral salts that are essential for health. Thus, no **chemical substances are released into the environment**.

In the Uveo range, you will find appliances compatible with your installation requirements: mains power connection, 12 V connection, cell option for more radiation data, and ratings compatible with the treatment required.

All the appliances in the Uveo range are sized to deliver a dose of 40 mJ/cm² at the end of the lamp life cycle. Pre-filtering is essential to ensure optimum operation of UVC appliances.



Filtering

Anti-scaling protection

UVC disinfection

Softening

Combined treatment units



UVc disinfection

Uveo range

✓ Uveo UVc disinfection modules

Power supply: 230 V 50/60 Hz + earth

Material: Stainless steel 304 L



Model	Reference	Rating	Flow	I/O	Max. service pressure	Energy consumption (W)	Weight (kg)	Dim. (mm) L x w x d	Qty.	Instantaneous control UVc radiation	Lamp operation time meter (digital)	Application	Guarantee*
Uveo 36	Q211006001	36 W	2 m ³ /h	¾"	5 bars	36	3.3	190x600x260	1	No	Yes	Household	3 years
Uveo 55	Q211007001	55 W	3 m ³ /h	¾"	5 bars	55	3.4	190x600x260	1	No	Yes	Household	3 years
Uveo 95	Q211008001	95 W	5 m ³ /h	1 ¼"	5 bars	96	3.55	190x600x285	1	No	Yes	Household/ Professional	3 years
Uveo 36 C	Q211004001	36 W	2 m ³ /h	¾"	5 bars	39	3.8	190x600x295	1	Yes	Yes	Household	3 years
Uveo 55 C	Q211005001	55 W	3 m ³ /h	¾"	5 bars	58	3.9	190x600x295	1	Yes	Yes	Household	3 years
Uveo 95 C	Q211009001	95 W	5 m ³ /h	1 ¼"	5 bars	99	4	190x600x295	1	Yes	Yes	Household/ Professional	3 years

* (excluding consumables and labour)

+ PRODUCTS



- ✓ Waterproofing standard IP31
- ✓ Appliances compliant with the Ministry of Health circular of 19/01/1987

GUARANTEE
3 YEARS

MAINTENANCE AND GUARANTEE

UVc lamps should be replaced every 9000 hours.
Preventive cleaning of the quartz sheaths is recommended with each lamp replacement.
The quartz seals should be replaced every 2 years to ensure that the appliance is waterproof.



Caution: Never expose yourself to UVc radiation from the lamps!

* Guarantee: 3 years parts and labour, excluding consumables and transport.

UVc disinfection

Uveo range

Options



Function	Rating	Reference	Description	Qty.
Converter 12 V = / 220 V~	300 W	Q516010001	Voltage converter 12 V = / 220 V~ Compatible with all Uveo models	1

Prefiltering recommendations



Flow	Reference	Head	Size	Filtering threshold	Packaging	Qty.
3 m ³ /h	517510	Polypropylene	9¾"	20 µm	Disposable	1
3 m ³ /h	527309	Nylon	9¾"	80 µm	Washable	1
5 m ³ /h	517520	Polypropylene	20"	20 µm	Disposable	1
5 m ³ /h	527320	Nylon	20"	80 µm	Washable	1
3 m ³ /h	Q113005001	Stainless steel	Specific	40/90 µm	Self-cleaning	1
5 m ³ /h	522528	Stainless steel	Specific	90 µm	Self-cleaning	1

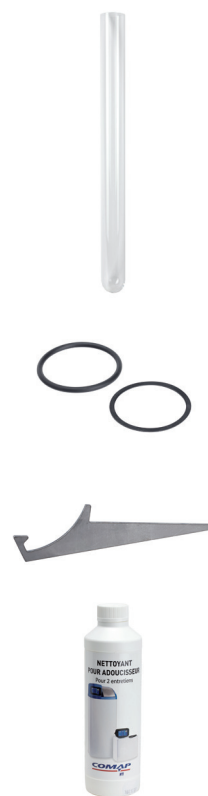


UVc disinfection

Uveo accessories

✓ Accessories and consumables

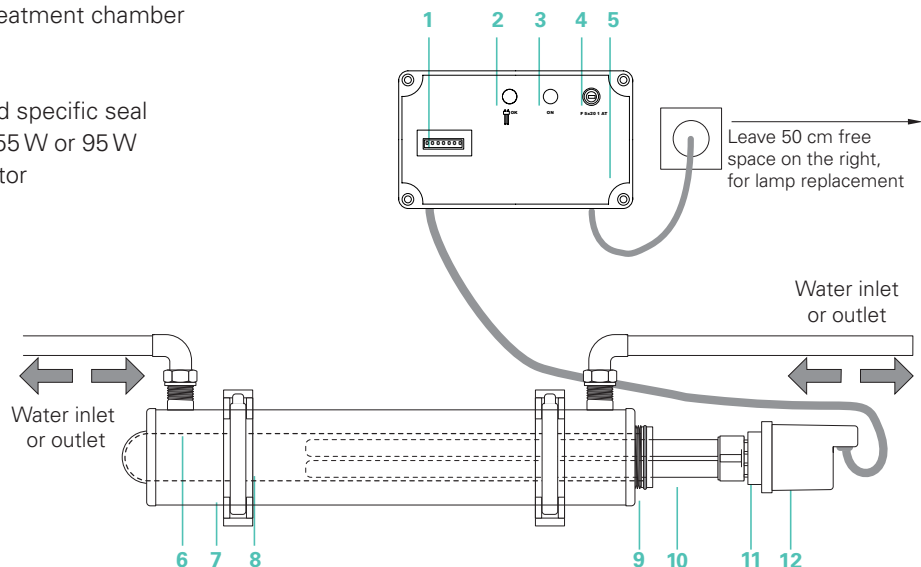
Reference	Description	Qty.
543092	Lamp Single base 36 W	1
543097	Set of 5 lamps Single base 36 W	5
543093	Lamp Single base 55 W	1
543098	Set of 5 lamps Single base 55 W	5
Q122003001	Lamp Single base 95 W	1



Reference	Description	Qty.
543099	Quartz + seals	1
Q512006001	Quartz seals (x2)	1
RI600078	Disassembly wrench	1
Q516005001	Cleaning/disinfecting product for quartz and softener resins	1

INSTALLATION DIAGRAM

1. Time meter for lamp change (9000 h or 1 year)
2. Lamp on indicator (green)
3. Power indicator light (orange)
4. Fuse housing and fuse
5. 36i (36 W) 55i (55 W) 95i (95 W) electrical modules
6. Stainless steel treatment chamber
7. Mountings
8. Quartz sheath
9. Clamping ring and specific seal
10. UVc lamp 36 W, 55 W or 95 W
11. Electrical connector
12. Protection cover



SOFTENING

Presentation of our softening range

COMAP Water Treatment offers effective water softening solutions.

Water softeners are installed on cold water pipes. They act on the physical-chemical composition of the water, by reducing the calcium and magnesium concentrations that cause scaling.

Water to be softened flows through ion exchanger resins (strong cationic resins) that change the calcium and/or magnesium into sodium. When the water leaves the appliance, it is no longer subject to scaling and has thus become "soft".

Their objective is to provide **maximum protection against scaling in pipes and appliances**. As the water flows through, the resins become saturated with calcium and magnesium. Regeneration is then necessary to recharge the resins with sodium ions, from a sodium chloride or brine (salt and water) solution, which the softener gets from the salt box.

Regeneration is activated automatically, during the night, by the automatic system in the softener hydraulic head. There are two regeneration methods:

- ✓ by monitoring volumes consumed (volumetric mode)
- ✓ by monitoring elapsed time (time mode)



Filtering

Anti-scaling protection

UVc disinfection

Softening

Combined treatment units



Softening

Softeo + single unit softeners

Why use the softener technology?

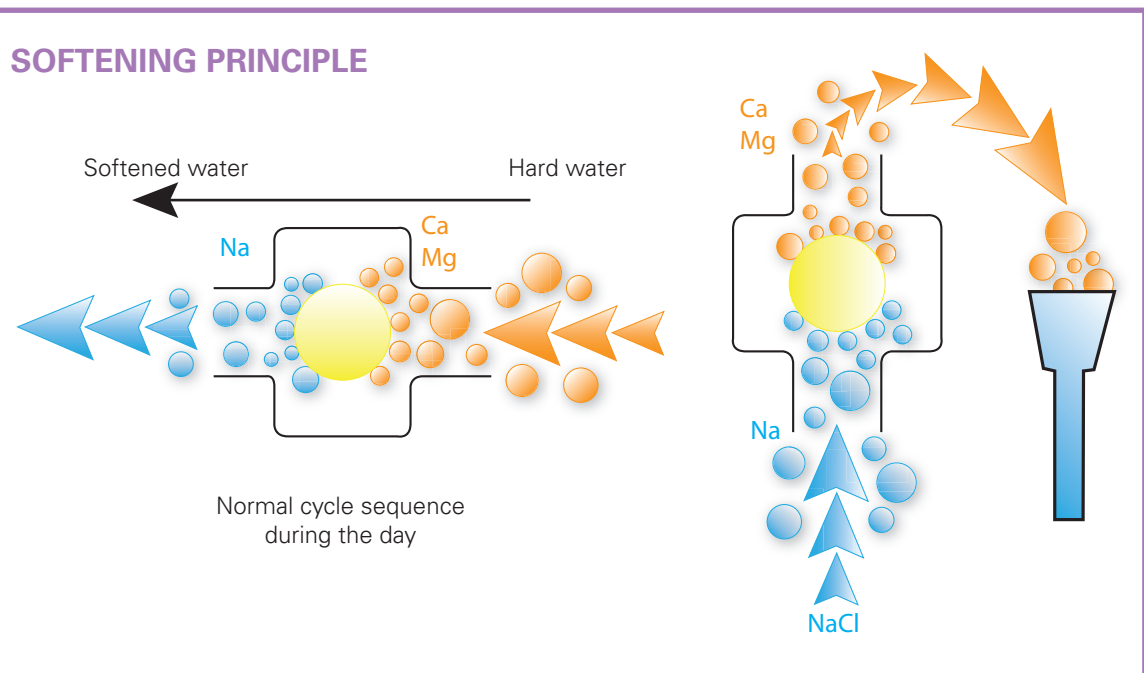
- ✓ for protection **AGAINST SCALING** in pipes, sanitary and household electrical appliances
- ✓ to ensure **MAXIMUM EFFICIENCY** of household equipment
- ✓ for **MORE PLEASANT WATER** in contact with the skin for washing and for the bath
- ✓ to **ensure the proper operation of specific equipment**: jacuzzis, hammam and balneotherapy
- ✓ to **save energy** and cleaning products
- ✓ for dishes **without marks** and softer **linen**

+ PRODUCTS



* Guarantee: 2 years parts and labour, excluding consumables and transport.

COMAP handles the startup of your Softeo softener, within 48 hours



Softening

Softeo + single unit range and accessories

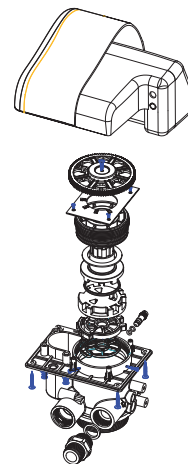
✓ The Softeo + range

Reference	Resin volume (liters)	I/O	Appliance dimensions (L x w x h) (mm)	Weight of appliance (kg)	Regeneration time (mn)
Q341001001	8	¾"	325x475x610	15	15
Q341002001	18	¾"	325x475x1070	28	31
Q341003001	26	¾"	325x475x1070	36	37



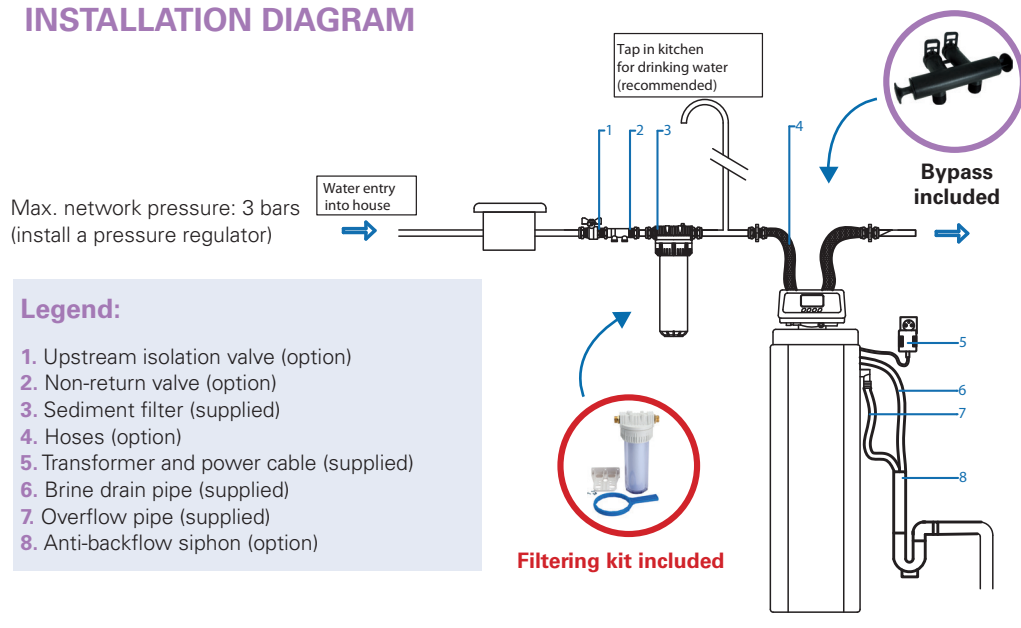
Sizing of appliance

Number of people in the household	1 to 2	3	4	5	6 to 8
Slightly hard water < 18°f	8L	8L	8L	18L	18L
Medium hard water 18 to 27°f	8L	8L	18L	18L	26L
Hard water 27 to 36°f	8L	18L	18L	26L	26L
Very hard water 36 to 45°f	18L	18L	26L	26L	26L
Extremely hard water 45 to 50°f	18L	18L	26L	26L	26L



1°f = 0.56 dH = 10 ppm = 0.1 mmol/l

INSTALLATION DIAGRAM





Softening

Bisoft dual unit softener and accessories

✓ The dual unit model

Sizing of the appliance

Each water is different. To find the product that best suits your requirements, refer to the table below. First, you need to know the hardness of your water supply.

Number of persons in the home	1 to 2	3	4	5	6 to 8
Slightly hard water < 18°f				X	X
Medium hard water 18 to 27°f			X	X	
Hard water 27 to 36°f		X	X		
Very hard water 36 to 45°f	X	X			
Extremely hard water 45 to 50°f	X	X			

x Dual unit appliance strongly recommended.

Choose an appliance in the Softeo range.



Item code: Q341004001

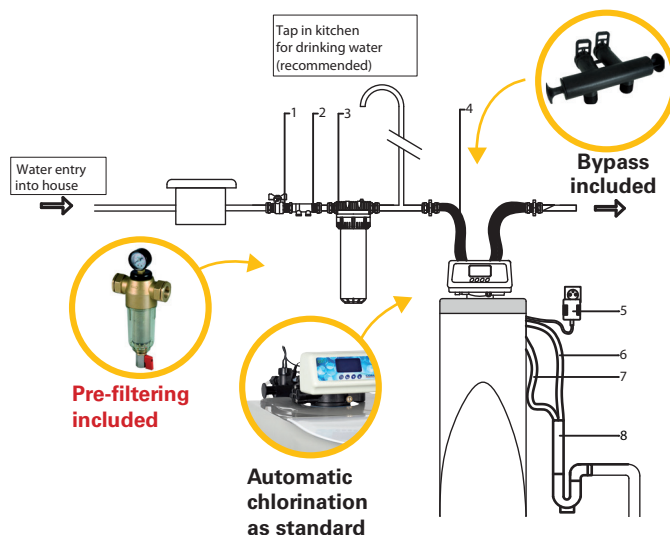
+ PRODUCTS

- ✓ Pre-filtering included
- ✓ Automatic chlorination as standard
- ✓ Bypass included
- ✓ Easy cleaning of salt box

Max. network pressure: 3 bars
(install a pressure regulator)

Installation

1. Upstream isolation valve (option)
2. Non-return valve (option)
3. Sediment filter (supplied)
4. Hoses (option)
5. Transformer and power cable (supplied)
6. Brine drain pipe (supplied)
7. Overflow pipe (supplied)
8. Anti-backflow siphon (option)



✓ Accessories and consumables



Reference	Description	Function
Q516004001	Salt recharge (25 kg) (EN973 type A)	Allow brine production for the regeneration of the resins



Reference	Description	Function
Q516007001	Connection / evacuation kit	Quick connection of appliance to existing system (hoses/ anti-pollution valves/ siphon)



Reference	Description	Function
Q516009001	Automatic chlorination kit	For automatic resin disinfection (can be incorporated in the appliance)



Reference	Description	Function
540072	TH test	Measures water hardness: setting up and monitoring of the softener operation



Reference	Description	Function
Q516005001	Disinfecting cleaner	Manual disinfecting of resins (for 2 cleaning operations, at least twice per year)

COMBINED TREATMENT UNITS

Presentation of our combined treatment units

COMAP Water Treatment offers a range of complete and original solutions, that respect the environment, to improve water quality in the home.

The treatment units combine several water treatment technologies within one unit. They may be installed on the system main water supply point (Komeo water treatment unit), on water recycling for the supply of a secondary system (Bio-Rain), or specifically at the point of use (UVc generator under sink).

The water treatment units incorporate several technologies within a single product. These standalone units solve various water treatment problems.

COMAP Water Treatment offers two water treatment unit installation options, to solve your problems most effectively:

- ✓ A treatment at the main water supply
- ✓ A treatment at the point of use



Filtering

Anti-scaling protection

UVc disinfection

Softening

Combined treatment units



Combined water treatment units

Treatment at main water supply

THE KOMEIO WATER TREATMENT UNIT

Komeio is the only solution that descales and purifies the water supply. It ensures both home protection and optimum drinking water quality in a single appliance.

FUNCTIONS	FILTERING SOLUTIONS: Carafes and filter cartridges	SOFTENERS	komeio
PROTECTS pipe systems and household electrical appliances from scaling	-	●	●
ELIMINATES the bad taste of chlorine	●	-	●
PROVIDES optimum drinking water quality	●	-	●
GUARANTEES water with no bacteria or viruses*	-	-	●
FILTERS OUT pesticides and herbicides	▲ ⁽¹⁾	-	●
TREATS heavy metals and manganese	▲ ⁽¹⁾	-	●
REDUCES nitrate content	▲ ⁽¹⁾	-	●
RESPECTS THE ENVIRONMENT with no chemical treatment or release of salts	●	-	●
DETECTS leaks in the system	-	-	●
CONTROLLABLE remotely	-	-	●

⁽¹⁾ Treatment level depending on filtering solution

* Neutralises 99.99 % of the micro-organisms randomly present in the water.



Test the remote control application for tablets and smartphones.

QUICK TO INSTALL, EASY TO MAINTAIN

- ✓ Can be installed in less than 1 hour using the template and the installation manual.
- ✓ No startup action is required, the Komeio functions are operational immediately after installation.
- ✓ The consumables (filters and lamp) are installed, and Komeio is set up in the factory.
- ✓ Maintenance is safe as the electrical power is automatically cut off when the Komeio unit is opened.
- ✓ Servicing is easy thanks to quickly accessible consumables and the automatic purge function on the prefilter.
- ✓ The Komeio is a compact design and is installed against a wall.

MAINTENANCE AND GUARANTEE

Change the cartridges at least once per year. The UVc lamp should be replaced every 12000 hours. Preventive cleaning of the quartz sheaths is recommended with each lamp replacement. The quartz seals should be replaced every 2 years, to ensure that the appliance is waterproof.

*Guarantee: 3 years parts and labour, excluding transport and consumables.



Caution: Never expose yourself to UVc radiation from the lamps.

GUARANTEE
3 YEARS

+ **PRODUCTS**



Combined water treatment units

Treatment at main water supply

TECHNICAL CHARACTERISTICS

Electrical functions

- ✓ Anti-scaling by electrical field, with 2 treatment ratings. Rimeau technology Atex CSTBat N° 575 – 05/1995.
- ✓ Stainless steel UVc treatment chamber. Lamp 25 W.
- ✓ Drinking water standard: optimum operation of the UVc lamp up to an instantaneous flow of 1.5 m³/h with at least 25 mJ/cm², in accordance with the directive of the DDASS circular of 19/01/1987.
- ✓ Electricity consumption slaved to water utilisation by an integral flow sensor (automatic standby function).
- ✓ 3.5" TFT touch screen . Resolution 320x240 pixels.
- ✓ Wi-Fi board 2.4 GHz single band, IEEE 802.11b/g/n.
- ✓ Entry and prefilter power-operated valves.
- ✓ Pressure sensors and flowmeter.
- ✓ Electrical power supply: 230 V AC 50-60 Hz with earth.
- ✓ Waterproofing standard: IP 20.- Electrical standard: EC compliant.
- ✓ Fuse: T 250 mA (5 x 20).



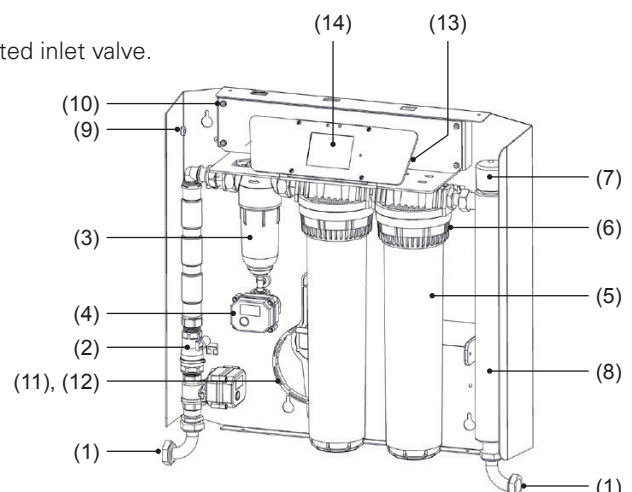
Item code: Q412005001

Water functions

- ✓ Stream self-cleaning prefilter with 2 filter ratings: 90 µm and 40 µm on stainless steel mesh.
- ✓ 10 µm BIRM® cartridge filter combined with extruded activated carbon: treatment of chlorine, iron and manganese, and reduces nitrate content.
- ✓ 10 µm KDF® cartridge filter combined with extruded activated carbon: treatment of heavy metals and micro-pollutants.
- ✓ Max. system pressure: 4 bars.
- ✓ Water temperature: 5 to 30 °C.
- ✓ Max. water flow rate: 2 m³/h
- ✓ Max. hardness: up to 45°f or 25°dH.
- ✓ ¾" male inlet/outlet (or female using angle unions supplied).
- ✓ Air purge on heads.
- ✓ Water purge for pressure release.
- ✓ Dimensions cm (H x L x D): 59 x 59 x 17.
- ✓ Weight: 20 kg.

KOMEO COMPONENT ELEMENTS

1. Inlet and outlet unions.
2. Flowmeter chamber- Anti-scaling- Power operated inlet valve.
3. Prefilter.
4. Power operated valve.
5. 15" filter bowls.
6. Filter nuts.
7. UVc lamp connector.
8. Anti-bacteria UVc chamber.
9. Power cable.
10. Pack of 4 batteries.
11. Prefilter wrench.
12. Filter wrench.
13. Water purge.
14. Touch screen.





Combined water treatment units

Treatment at main water supply

✓ Consumables



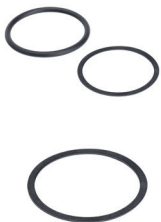
Ref.	Name	Treatment	Qty.
Q511015001	Cartridge activated carbon + KDF® 10 µm 15''	Heavy metals / taste / smell / pesticides / herbicides	1
Q511016001	Cartridge activated carbon + BIRM® 10 µm 15''	Manganese / iron / taste / smell / pesticides / herbicides	1
Q512013001	UVc lamp single base 25 W	Bacteria / viruses	1
Q511017001	Mesh for prefilter 40 - 90 µm	Sediment / matter in suspension	1



Ref.	Name	Qty.
Q512014001	Quartz tube + waterproofing seals	1



Ref.	Name	Qty.
Q516005001	Cleaning product/ disinfectant for quartz and softener resins	1



Ref.	Name	Qty.
Q513010001	Quartz seals (x2)	1
527199	O-rings for filter bowl	5

Combined water treatment units

Treatment at main water supply

BIO-RAIN RECYCLED WATER TREATMENT

For rain, drill or well water, etc.

Water collected in your tank is initially filtered by a washable filter. Matter in suspension larger than 80 µm is trapped by this filter. The water then flows through a micro-porous structure (activated carbon), that again filters the impurities (larger than 10 µm) and neutralises the bad smell, the pesticides and the herbicides, by an adsorption phenomenon.

Micro-pollution larger than 10 µm is trapped by this cartridge.

Finally, the UVC fulfils its anti-bacteria function. It destroys the DNA and RNA of the micro-organisms and viruses present in the water, continuously and with no added chemical substances.

3 reasons to choose the Bio-Rain technology:

- ✓ To use recycled water in the secondary network, thus **MAKING VALUABLE SAVINGS**
- ✓ To act **ECOLOGICALLY**
- ✓ To go along with a practice that is becoming popular, **ENCOURAGED BY THE FRENCH AUTHORITIES** in the directive of 21st August 2008

+ PRODUCTS



GUARANTEE
3
YEARS

MAINTENANCE AND GUARANTEE

Change the activated carbon cartridge at least 4 times per year.
The UVC lamps should be replaced every 9000 hours.
Preventive cleaning of the quartz sheaths is recommended with each lamp replacement.
The quartz seals should be replaced every 2 years, to ensure that the appliance is waterproof.
Clean the washable cartridge at least 4 times per year.

*Guarantee: 3 years parts and labour, excluding transport and consumables.



Caution: Never expose yourself to UVC radiation from the lamps.





Combined water treatment units

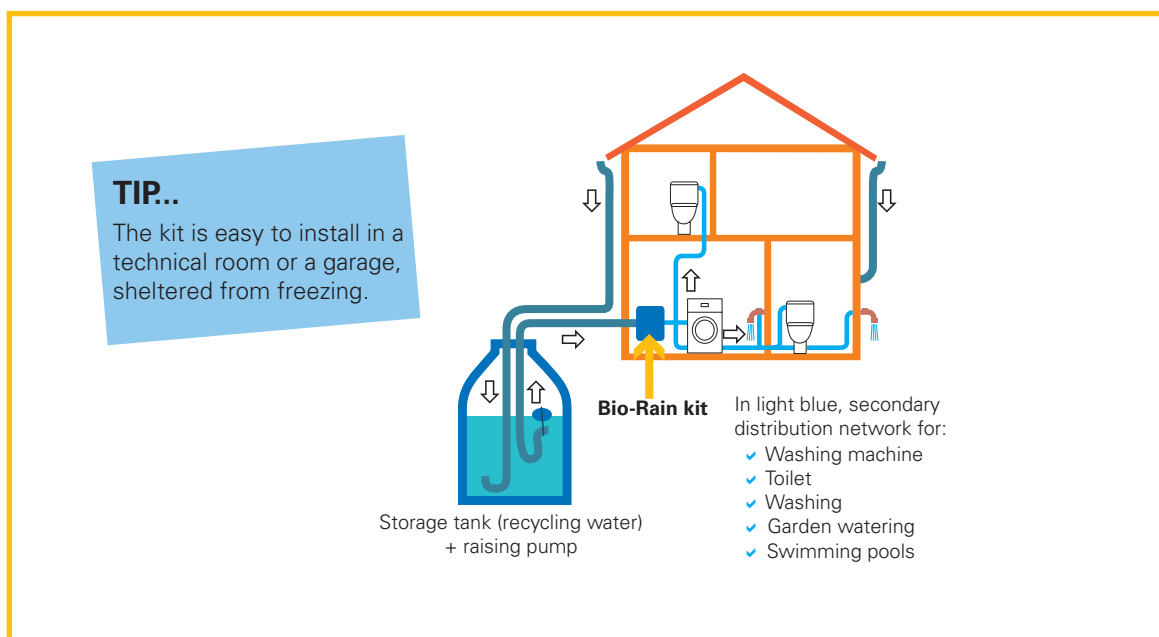
Treatment at main water supply

HOW TO INSTALL YOUR BIO-RAIN COMBINED WATER TREATMENT UNIT?

The kit may be installed on a standard rainwater recycling system:

- ✓ upstream of a new secondary system, disconnected from your public drinking water supply system,
- ✓ downstream of a booster, within the context defined by the directive of 21st August 2008.

Allow a space of 50 cm to allow the lamp to be changed once per year, or every 9 000 h.



Bio-Rain technical characteristics

- ✓ 3/4" inlet and outlet connections
- ✓ Power supply 230 V- 50 Hz + earth
- ✓ Fuse: F. 5x20 T 1 A
- ✓ UVc lamp rating: 36 W
- ✓ Water temperature: 5 to 20 °C
- ✓ Room temperature: 5 to 35 °C
- ✓ Water pressure: max. 2 to 5 bars (install a water pressure reducer if pressure is higher)
- ✓ Max. water flow rate: 2 m³/h
- ✓ Prefiltering: 80 µm
- ✓ Filtering: 10 µm
- ✓ Dimensions (LxHxD) = 540 mm x 600 mm x 280 mm



Item code: Q211003001

Combined water treatment units

Treatment at main water supply

✓ Consumables



Ref.	Name	Qty.
527809	10 µm activated carbon cartridge 20"	1



Ref.	Name	Qty.
543092	Single base lamp 36 W	1



Ref.	Name	Qty.
527309	Washable cartridge 80 µm	1



Ref.	Name	Qty.
543099	Quartz + seals	1



Ref.	Name	Qty.
RI600078	Disassembly wrench	1



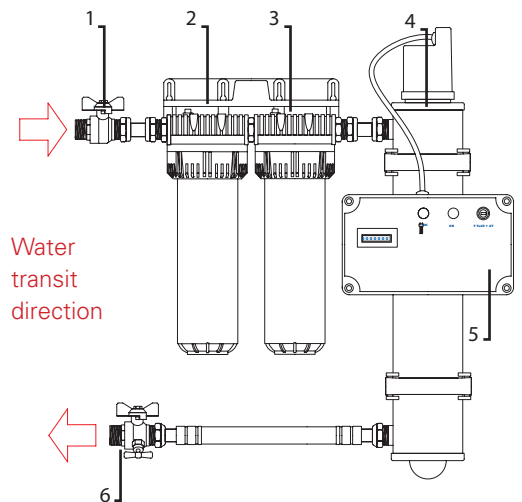
Ref.	Name	Qty.
Q512006001	Quartz seals (x2)	1



Ref.	Name	Qty.
Q516005001	Cleaning/disinfecting product for quartz and softener resins	1

THE BIO-RAIN SYSTEM IN DETAIL











1. Inlet valve
2. Filtering
3. Filtering and activated carbon
4. UVc treatment
5. Electrical unit
6. Purge



Alphabetic Index

Item code	Name	Pages
510206	Magnetic anti-scaling 5102, D. ¾" for 1.5 m³/h	24
510306	Magnetic anti-scaling 5103 slaved to delivery, D. 3/4" for 2.2 m³/h	24
517505	Anti-sediment cartridge, sprayed PP 5 µm, H. 9¾"	10
517510	Anti-sediment cartridge, sprayed PP 20 µm, H. 9¾"	10
517520	Anti-sediment cartridge, sprayed PP 20 µm, H. 20"	10
517709	Anti-sediment cartridge, pleated fabric 15 µm, H. 9¾"	10
521006	Sludge collector for heating systems, transparent pipe, D. ¾"	20
521008	Sludge collector for heating systems, transparent pipe, D. 1"	20
521010	Sludge collector for heating systems, transparent pipe, D. 1¼"	20
521012	Sludge collector for heating systems, transparent pipe, D. 1½"	20
521086	Sludge collector for heating systems, long metal pipe, D. ¾"	20
521088	Sludge collector for heating systems, long metal pipe, D. 1"	20
521090	Sludge collector for heating systems, long metal pipe, D. 1¼"	20
521092	Sludge collector for heating systems, long metal pipe, D. 1½"	20
522526	Anti-sediment self-cleaning filter 90 µm, with wheel, D. ¾"	19
522527	Anti-sediment self-cleaning filter 90 µm, with wheel, D. 1"	19
522528	Anti-sediment self-cleaning filter 90 µm, with wheel, D. 1¼"	19
522599	Spare mesh for anti-sediment self-cleaning filter 90 µm	19
527126	Filter case empty, head and plastic nut, transparent bowl, D. ¾", H. 9¾"	8
527127	Filter case empty, head and plastic nut, transparent bowl, D. 1", H. 9¾"	8
527130	Filter case empty, head and brass nut, transparent bowl, D. ¾", H. 9¾"	8
527131	Filter case empty, head and brass nut, transparent bowl, D. 1", H. 9¾"	8
527132	Filter case empty, head and brass nut, transparent bowl, D. 1¼", H. 9¾"	8
527170	Filter case empty, head and plastic nut, transparent bowl, D. ¾", H. 20"	9
527171	Filter case empty, head and plastic nut, transparent bowl, D. 1", H. 20"	9
527177	Filter case empty, head and brass nut, transparent bowl, D. 1½", H. 20"	8
527178	Filter case empty, head and brass nut, transparent bowl, D. 2", H. 20"	8
527191	Transparent bowl, H. 9¾"	12
527192	Nut for plastic filter case	12
527193	Transparent bowl, H. 20"	12
527197	Non-return valve for filter nipple ¾"	12
527198	Set of seals for plastic filter case	12
527199	Set of 5 O-rings for filter bowl	12 / 38
527226	Filter case empty, head and plastic nut, opaque bowl, D. ¾", H. 9¾"	9
527270	Filter case empty, head and plastic nut, opaque bowl, D. ¾", H. 20"	9
527291	Opaque bowl, H. 9¾"	12
527309	Anti-sediment cartridge, nylon washable 80 µm, H. 9¾"	10 / 41
527320	Anti-sediment cartridge, nylon washable 80 µm, H. 20"	10
527509	Anti-scaling cartridge 5275 (polyphosphates), H. 9¾"	26
527709	Anti-lead, pesticides, chlorine, taste and smell cartridge, H. 9¾"	11
527799	Set of 5 soft seals for cartridges 5273, 5275, 5276, 5277, 5278	12
527809	Anti-sediment cartridge (10 µm), pesticides, chlorine, taste and smell, H. 9¾"	11 / 41
527820	Anti-sediment cartridge (10 µm), pesticides, chlorine, taste and smell, H. 20"	11
528000	Disassembly wrench for plastic filter	12
528030	Disassembly wrench for brass filter head	12
528100	Adapter piece for 2 cartridges in series (compatible 5273 and 5274)	12
528101	Adapter piece for 2 cartridges in series (compatible 5275, 5276 and 5277)	12
528809	Anti-bacteria (0.1 µm), sediment, pesticides, chlorine, taste and smell cartridge, H. 9¾"	11
528906	Union M/M ¾" to connect 2 plastic filters	12
528909	Anti-bacteria cartridge (0.1 µm), H. 9¾"	11
529311	Mounting bracket for 1 plastic filter (with screws)	12
529312	Mounting bracket for 2 plastic head filters (with screws)	12
529505	Polyphosphates recharge bag, 1 kg	26
540072	Hardness TH (°f) measurement for adjusting softeners (liquid reagent)	34
543092	Lamp single base 36Watts for Station 542800 and for Uveo 36	30 / 41
543093	Lamp single base 55Watts for Uveo 55	30

Alphabetic Index

Item code	Name	Pages
543097	Set of 5 single base lamps 36 W for Station 542800 and for Uveo 36	30
543098	Set of 5 single base lamps 55 W for Uveo 55	30
543099	Lamp quartz with seal for 5 in 1 Station and Uveo	30 / 41
Q111001090	Basic eco empty filter case D. ¾", H. 9¾" x 12 pieces 	8
Q112001001	Unit with bypass transp. bowl F¾" with mounting bracket and wrench x 5	25
Q112003001	Mini filter for Altipur tap	17
Q113001090	Basic eco anti-sediment cartridge, sprayed PP 20 µm, H. 9¾" x 40 pieces 	10
Q113004090	Basic eco anti-sediment cartridge, nylon washable 80 µm H. 9¾" x 30 pieces 	10
Q113005001	Stream self cleaning anti-sediment filter 90/40 µm D. 1" + adapter ¾"	19
Q113006090	Basic eco activated carbon cartridge 10 µm H. 9¾" x 25 pieces 	11
Q114000001	Mounting bracket for 1 brass head filter (with screws)	12
Q114001090	Basic eco disassembly wrench for plastic filter x 10 pieces 	12
Q114002090	Basic eco mounting bracket for 1 plastic filter (with screws) x 10 pieces 	12
Q114003001	Bypass for dual filter unit x 5	26
Q122003001	Lamp single base 95 Watts for Uveo 95	30
Q211003001	Bio-Rain kit for rain, drill and well water, for 2 m³/h ¾"	40
Q211004001	Uveo generator 36 W with cell, 2 m³/h chamber ¾"	28
Q211005001	Uveo generator 55 W with cell, 3 m³/h chamber ¾"	28
Q211006001	Uveo generator 36 W, 2 m³/h chamber ¾"	28
Q211007001	Uveo generator 55 W, 3 m³/h chamber ¾"	28
Q211008001	Uveo generator 95 W, 5 m³/h chamber 1 ¼"	28
Q211009001	Uveo generator 95 W with cellule, 5 m³/h chamber 1 ¼"	28
Q311001090	Complete unit transparent bowl F¾" with bracket and wrench x 5	25
Q311002001	Electronic scaling inhibitor 5106, D. ¾", 0 to 3 m³/h cold water / hot water	23
Q311003090	Anti-scaling mini-filter ¾" x 10 pieces	25
Q312001090	Basic eco polyphosphates cartridge for filter 9¾" x 25 pieces 	26
Q312004090	Basic eco polyphosphates recharge 400 g x 25 pieces 	26
Q341001001	"Softeo +" softener 8 l (filtering included)	33
Q341002001	"Softeo +" softener 18 l (filtering included)	33
Q341003001	"Softeo +" softener 26 l (filtering included)	33
Q341004001	Bisoft dual unit softener 20 l	34
Q412005001	Komeo water treatment station	37
Q511001001	Cartridge for Altipur mini filter	17
Q511008001	Connection kit ¾" male	12
Q511009001	Connection kit 1" male	12
Q511011001	Activated carbon/Heavy metals cartridge 10 µm for PRO+ 5 in 1 station	11
Q511015001	Komeo activated carbon + KDF cartridge 15" 10 µm	38
Q511016001	Komeo activated carbon + BIRM cartridge 15" 10 µm	38
Q511017001	Mesh for Stream prefilter	19 / 38
Q512006001	Set of quartz seals Uveo 36/55/95	30 / 41
Q512013001	UVc lamp 25 W Komeo	38
Q512014001	Quartz tube + Komeo seals	38
Q513010001	Komeo quartz tube seals kit	38
Q516004001	Bag of salt pellets EN973 (25 kg)	34
Q516005001	Cleaning / disinfecting product for quartz and softener resins	30 / 34 / 38 / 41
Q516006001	Filtering kit 20 µm with filter, cartridge, bracket and wrench	10
Q516007001	Softener connection kit	34
Q516009001	Automatic chlorination kit for Softeo softener resins	34
Q516010001	12 V adapter for Uveo 36, Uveo 55, Uveo 95	29
RI600078	Disassembly wrench for lamp quartz 5 in 1 Station and Uveo	30 / 41
RI610071	Stream self-cleaning filter bowl seal	19
RI630037	Opaque bowl, H. 20"	12
RI660112	Basic eco anti-sediment cartridge, wound PP 25 µm, H. 9¾" x 70 pieces 	10
RI970018	Sludge collector for heating systems, long metal pipe, D. 2"	20
RI970047	Sludge collector for heating systems, transparent pipe, D. 2"	20
RI990135	Basic eco empty filter case D. 1", H. 9¾" x 12 pieces 	8

COMAP

Design and manufacturing industrial Group, with 60 years of expertise in the field of climatic engineering, the **COMAP** Group provides overall solutions that enhance the performance of buildings. Our connection, regulation and water treatment solutions reduce overall energy expenditure in buildings while optimising both comfort and safety.

COMAP WT, formerly RIME, is the Group unit that specialises in water treatment and water quality. For more than 30 years, we have been

developing a full range of solutions that meet the requirements of industrial, tertiary sector and household applications.

Our industrial site is ISO 9001 certified and is located at Montélier in the Drôme (26) department. We design, manufacture and inspect all our products on site. Our expertise is based on our considerable treatment technologies skills: filtering, anti-scaling protection, softening, disinfection and UVc dechloramination.

COMAP Water Treatment

ZA Les petits champs
26120 Montélier - France
Tel: +33 (0)4 75 85 28 11
Fax: +33 (0)4 75 85 42 62

www.comapwt.com
www.aalberts.nl